

# PRONTO™ GEMINI



**ABCDEFGHIJKLMNOPQRSTUVWXYZ.,: - &  
1234567890 ¢ \$ ? ! ' " " ¼ ½ + # # ( ) % / @**

## Gemini Pronto™ Changeable Copy Style ADM Letters & Accessories

Each Standard Set contains the following character counts. Sets are available in the following colors: all black, black letters with red numbers, all red, or all white.

**ABCDEFGHIJKLM  
NOPQRSTUVWXYZ  
1234567890 ¢ \$**

### Pronto 100pc Standard Set

EACH	PC. EACH
E	7
A I	6
O U	5
L N R S T P	4
F G H M	3
B C D	3
J K V W Y Z	2
Q X \$ ¢	1
0 1 2 3 4 5 6 7 8 9	1

Each Standard Set contains the following character counts.

Sets are available in the following colors: all black, black letters with red numbers, all red, or all white.

### Pronto 50pc Punctuation Set

EACH	PC. EACH
& . , ! - ? : ; " ' ' / \$ ¢	2
1/2 1/4 ( ) @ # .com	2
f in t .COM	2
+ %	1

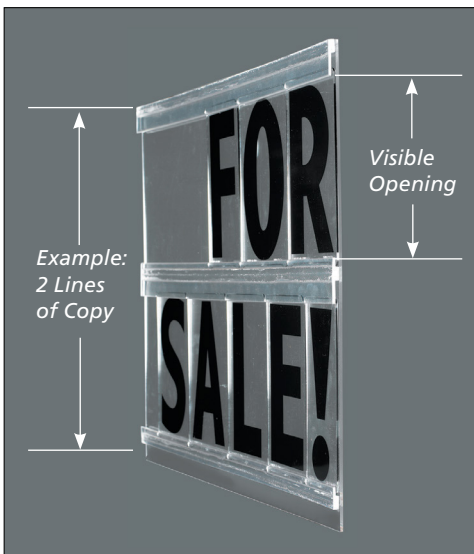


**IMPORTANT NOTE:** To order, you need both Letter Height and Panel Height

LETTER HEIGHT	PANEL HEIGHT	AVE. PANEL WIDTH	BLACK	RED
4"	4 7/8"	3 1/2"	✓	✓
6"	6 7/8"	4 1/2"	✓	✓
8" on 9"	8 7/8"	7 1/2"	✓	✓
8"	9 7/8"	7 1/2"	✓	✓
10"	11 7/8"	7 1/2"	✓	✓

## Pronto™ Track Installation

Accurate spacing is the key to a good Pronto changeable letter system. Refer to the diagram shown here to select the method of track installation you prefer and determine the total height of your sign. The use of dual track automatically spaces the rows and reduces the number of track pieces required. If row spacing needs to be greater use a combination of top and bottom tracks.



### Expansion

If the surface you are attaching the Pronto Track onto will expand and contract at somewhat the same rate as the plastic track, installation can be done using either rivets or adhesive. Using a chalk line and level, mark the location for your first piece of track.

**For a rivet installation:** drill a hole through the track and background (maximum 8" center to center). To fasten track to 1/8" - 3/16" background, drill .1875 diameter hole (3/16" drill bit). Insert the Pronto rivet, then push the pin to its closed position.

**For an adhesive installation:** Using a syringe or bottle applicator with a thin needle tip, apply a steady line of adhesive, such as WELD-ON #3 or #4, to the back face of the track. Tape in place until adhesive has set up completely.

### Non-expansion

If the surface you are attaching Pronto Track onto will not expand or contract (ie. wood or metal) at the same rate as the plastic track, we recommend the following installation procedure:

- Drill or route horizontal oblong or oversized holes in the track.
- Using a sheet metal screw, because of its squared shoulder; put the screw in the center of the horizontal hole.
- Do not tighten the screw. Leave it approximately 1/4 to 1/2 turn loose.
- When all the screws are in the track you should be able to wiggle horizontally a small distance.
- Now the track is able to expand or contract with temperature changes, and shouldn't buckle, crack or warp.

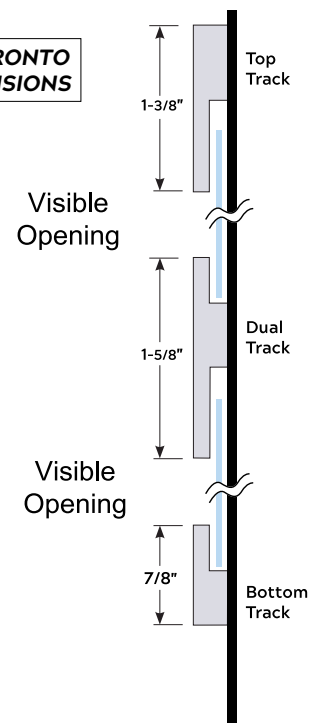
### Standard Pronto Track Charts

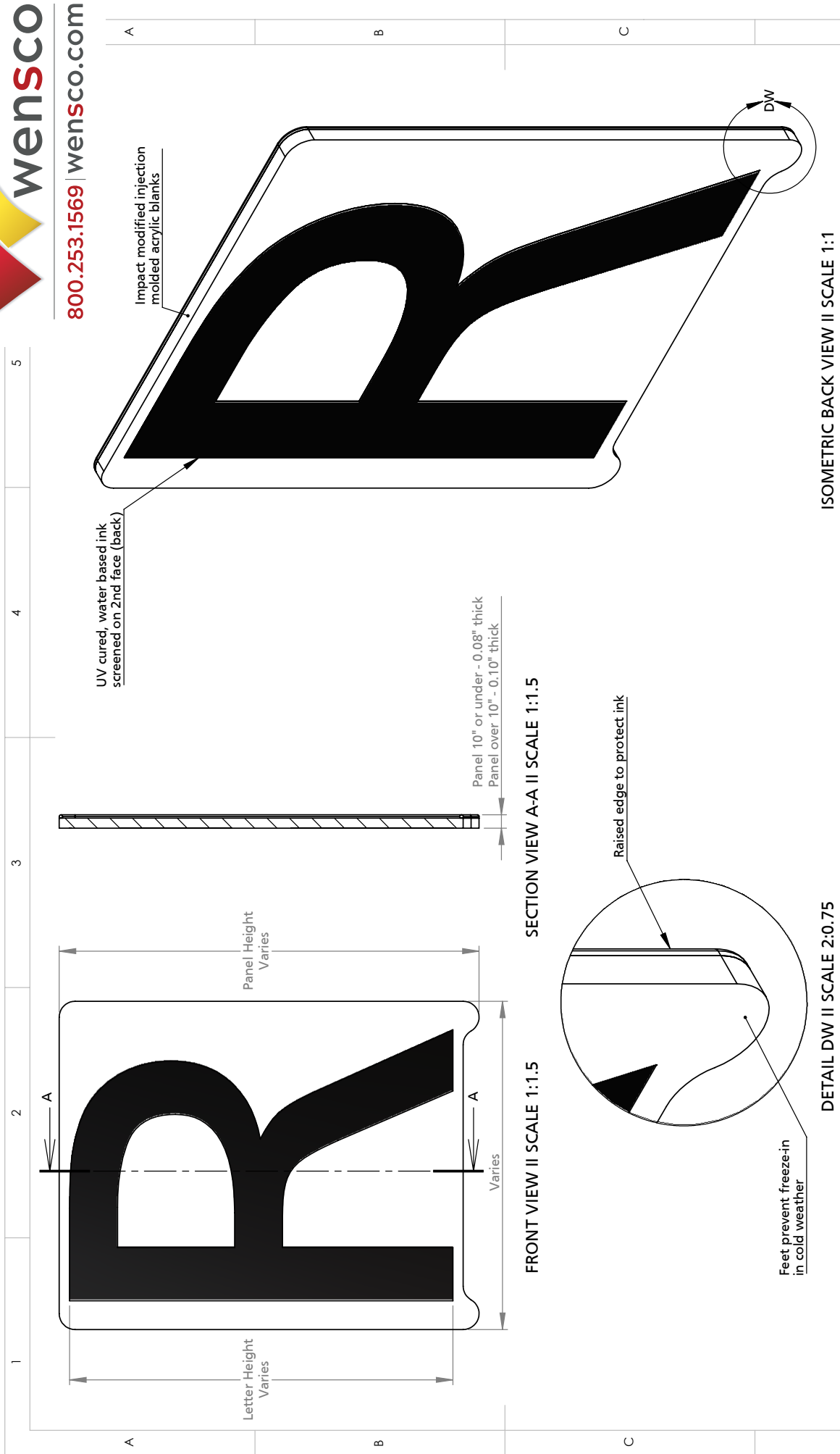
Lines of Copy	TOP TO BOTTOM HEIGHT				
	3" Letter	4" Letter	6" Letter	8 on 9" Letter	8" Letter
1	5 1/2"	6 1/2"	8 1/2"	10 1/2"	11 1/2"
2	10 3/8"	12 3/8"	16 3/8"	20 3/8"	22 3/8"
3	15 1/4"	18 1/4"	24 1/4"	30 1/4"	33 1/4"
4	20 1/8"	24 1/8"	32 1/8"	40 1/8"	44 1/8"
5	25"	30"	40"	50"	55"


VISIBLE OPENING FOR TRACK SPACING				
3" Letter	4" Letter	6" Letter	8 on 9" Letter	8" Letter
3 1/4"	4 1/4"	6 1/4"	8 1/4"	9 1/4"

### STANDARD PRONTO TRACK DIMENSIONS





TITLE: <b>PRONTO CHANGEABLE LETTERS</b>	
MATERIAL: <b>ACRYLIC</b>	PRODUCT TYPE: <b>PLASTIC CHANGEABLE LETTERS</b>
DWG NO. : PRON10	REV 02/17/15
SCALE: AS INDICATED	
SHEET 1 OF 1	



**GEMINI**

Notes

- 3" - 10" Letters/based on style.
- Black, Red, White, Green, Blue letters on clear blanks.
- UV Cured, water based ink letters. Clear blanks available.
- Available in Modern, ADIV, AD, Condensed, Alt. Toned, Optima Styles
- Installed using PRONTO track

2