

NEKOOSA GLASS FINISHES™

Deep Etch

Light Etch

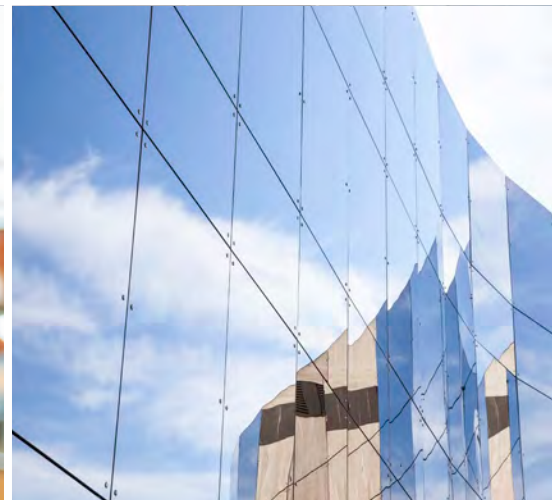
Dusted Crystal

Frost

Sand Blast

Sand Matte

Bird Safety Film



Nekoosa Glass Finishes™ offers a wide range of printable window films designed to transform the appearance of interior and exterior commercial buildings for privacy and finishing purposes. Available in Deep Etch, Light Etch, Dusted Crystal, Frost, Sand Blast and Sand Matte finishes, each film offers a degree of privacy by obscuring direct visibility while allowing excellent light transmission. Each film includes a solvent-performance permanent adhesive and a PET liner for excellent printability and 7 years of outdoor durability. For detailed designs and lettering, these films can be plotter-cut to create decals, logos and decorative displays. Nekoosa Glass Finishes™ additionally offers a Bird Safety Film engineered specifically to allow birds to see windows that otherwise appear invisible.

NEKOOSA GLASS FINISHES™



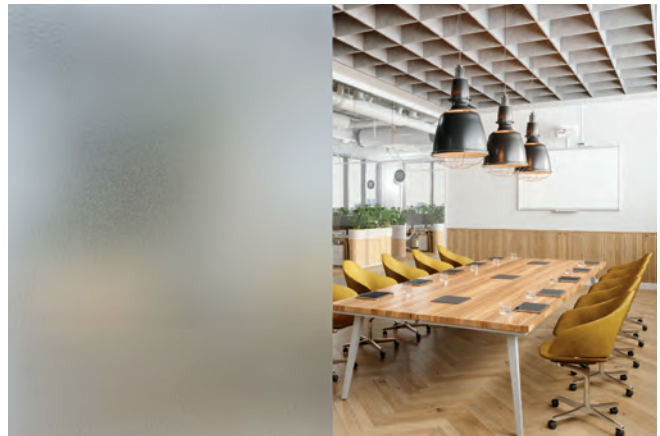
Deep Etch



Light Etch



Dusted Crystal



Frost





Sand Blast



Sand Matte



 Bird Safety Film

STOCKED PRODUCTS ▶

	Finish/Color	SKU #	Liner	Size
Nekoosa Glass Finishes™				
Nekoosa Glass Finishes - Deep Etch	Opaque Frosted	DW9867-60100 ●	PET Liner	60" x 100'
Nekoosa Glass Finishes - Light Etch	Opaque Frosted	DW4477-60100 ●	PET Liner	60" x 100'
Nekoosa Glass Finishes - Dusted Crystal	Opaque Frosted	DW3412-60100 ●	PET Liner	60" x 100'
Nekoosa Glass Finishes - Frost	Clear Embossed	DW2345-60100 ●	PET Liner	60" x 100'
Nekoosa Glass Finishes - Sand Blast	Clear Embossed	DW6231-60100 ●	PET Liner	60" x 100'
Nekoosa Glass Finishes - Sand Matte	Opaque Frosted	DW1823-60100 ●	PET Liner	60" x 100'
Nekoosa Glass Finishes - Bird Safety Film	DOT	DW7154-6095 ●	PET Liner	60" x 95'



NEKOOSA BUCKS
available in select rolls listed above.

 = PVC-Free



Choose your perfect tape.

We recommend applying Nekoosa Glass Finishes™ with these tapes.

RTape Product Number/Type		Tack Level
Application Tapes – Standard Weight Paper	4075, 4075RLA	High-Tack (16-18 oz)
Clear Film Tapes	AT65 Textured Clear Film	High Tack (2-6 oz)



800.826.4886 | sales@nekoosa.com

NEKOOSA.COM

TECHNICAL DATA ▶

			Deep Etch	Dusted Crystal	Frost
Physical Properties					
Finish			Frosted/Sandblasted Translucent Glass	Crystal Etched Translucent Glass	Frosted Translucent Glass
Color			Clear	Clear	Clear
Adhesive			Clear, Permanent Solvent Acrylic	Clear, Permanent Solvent Acrylic	Clear, Permanent Solvent Acrylic
Film			3 mil Clear Polymeric High Grade Vinyl	4 mil Clear Polymeric High Grade Vinyl	4 mil Clear Polymeric High Grade Vinyl
Liner			3 mil Siliconized PET Liner	3 mil Siliconized PET Liner	3 mil Siliconized PET Liner
Thickness	Film	TAPPI T-411	3.0 ± 0.3 mil	4.0 ± 0.4 mil	4.0 ± 0.4 mil
	Film w/ Adhesive	TAPPI T-411	4.0 ± 0.4 mil	5.0 ± 0.5 mil	5.0 ± 0.5 mil
	Total Thickness	TAPPI T-411	7.0 ± 0.7 mil	8.0 ± 0.8 mil	8.0 ± 0.8 mil
Adhesion	Glass, 15 min Room Temp Dwell	ASTM D3330	3.0 ± 1 lb/in	3.0 ± 1 lb/in	3.0 ± 1 lb/in
	Glass, 24 hr Room Temp Dwell	ASTM D3330	5.5 ± 1 lb/in	5.5 ± 1 lb/in	5.5 ± 1 lb/in
Weight	Film w/ Adhesive	TAPPI T-410	110-132 gsm	140-170 gsm	140-170 gsm
	Total w/ Liner	TAPPI T-410	205-250 gsm	240-290 gsm	240-290 gsm
Visible Light Transmission			%	44	73
UV Light Rejection			%	66	96
Infrared Light Rejection			%	48	26
Printability			UV, Offset, Screen, Latex, Solvent, Eco-Solvent	UV, Offset, Screen, Latex, Solvent, Eco-Solvent	UV, Offset, Screen, Latex, Solvent, Eco-Solvent

			Light Etch	Sand Blast	Sand Matte
Physical Properties					
Finish			Acid Etched, Soft Frost Translucent Glass	Translucent Sandblasted Glass	Frosted Sandblasted Glass
Color			Clear	Clear	Clear
Adhesive			Clear, Permanent Solvent Acrylic	Clear, Permanent Solvent Acrylic	Clear, Permanent Solvent Acrylic
Film			3 mil Clear Polymeric High Grade Vinyl	6 mil Clear Polymeric High Grade Vinyl	6 mil Clear Polymeric High Grade Vinyl
Liner			3 mil Siliconized PET Liner	3 mil Siliconized PET Liner	3 mil Siliconized PET Liner
Thickness	Film	TAPPI T-411	3.0 ± 0.3 mil	6.0 ± 0.6 mil	6.0 ± 0.6 mil
	Film w/ Adhesive	TAPPI T-411	4.0 ± 0.4 mil	7.0 ± 0.7 mil	7.0 ± 0.7 mil
	Total Thickness	TAPPI T-411	7.0 ± 0.7 mil	10.0 ± 1.0 mil	10.0 ± 1.0 mil
Adhesion	Glass, 15 min Room Temp Dwell	ASTM D3330	3.0 ± 1 lb/in	3.0 ± 1 lb/in	3.0 ± 1 lb/in
	Glass, 24 hr Room Temp Dwell	ASTM D3330	5.5 ± 1 lb/in	5.5 ± 1 lb/in	5.5 ± 1 lb/in
Weight	Film w/ Adhesive	TAPPI T-410	110-132 gsm	220-222 gsm	220-222 gsm
	Total w/ Liner	TAPPI T-410	205-250 gsm	300-363 gsm	300-363 gsm
Visible Light Transmission			%	56	19
UV Light Rejection			%	53	98
Infrared Light Rejection			%	42	68
Printability			UV, Offset, Screen, Latex, Solvent, Eco-Solvent	UV, Offset, Screen, Latex, Solvent, Eco-Solvent	UV, Offset, Screen, Latex, Solvent, Eco-Solvent

			Bird Safety Film
Physical Properties			
Finish			Gloss with Bird Deterrent Pattern
Color			Clear
Adhesive			Clear, Permanent Acrylic
Film			Clear PET with 1/4" Frosted Dot Pattern
Liner			2 mil PET Liner
Thickness	Film	TAPPI T-411	4.0 ± 0.4 mil
	Film w/ Adhesive	TAPPI T-411	5.0 ± 0.5 mil
	Total Thickness	TAPPI T-411	7.0 ± 0.7 mil
Adhesion	Glass, 15 min Room Temp Dwell	ASTM D3330	3.0 ± 1 lb/in
	Glass, 24 hr Room Temp Dwell	ASTM D3330	5.5 ± 1 lb/in
Weight	Film w/ Adhesive	TAPPI T-410	150-170 gsm
	Total w/ Liner	TAPPI T-410	210-250 gsm
Puncture Test			ASTM D4830 70 lbs

Conditions for Use			
Shelf Life	1 year		
	Bird Safety Film	Up to 5 years*	
	Deep Etch	Up to 7 years*	
	Dusted Crystal	Up to 7 years*	
	Outdoor Durability	Frost	Up to 7 years*
		Light Etch	Up to 7 years*
Sand Blast		Up to 7 years*	
	Sand Matte	Up to 7 years*	
Min Application Temp		40° F (4° C)	
Service Temp Range		-20° to 150° F (-29° to 66° C)	
Solvent Resistance		Good**	
Water Resistance		Excellent	

*Vertical applications
 **Good for most petroleum solvents and lower aliphatic alcohols.
 For ultimate solvent resistance, edge sealing is recommended.



800.253.1569 | wensco.com