



With upgraded design in end cap, G2G Aurora Flex Series can achieve higher waterproof effect, perfectly to be used for border tubing, sign lettering and accent lighting.

Flex Series

The best alternative to neon lighting. Our Fully flexible design will allow for 90° angles or less! Aurora Flex comes in 11 different colors and having a traditional outdoor neon look allows you to recreate any neon sign at half the cost and half the upkeep.



Flex Mini



Aurora RGB



Aurora Flex



Aurora Flex Red (Ruby Shell)



Neon	Input Voltage	Color	Cut Intervals	LED	LEDs Qty	Power	Lengths
Aurora Flex Mini	12VDC	Pinkish Purple / WW / Ice Blue / O / W / Y / R / G / B / Pink / Lemon Yellow	1.4"	SMD 2835	24LED/Ft	2.8W/Ft	20Ft/Tray,5Trays/Case
Aurora Flex Mini Red (Ruby Shell)	12VDC	Ruby Shell	1.4"	SMD 2835	24LED/Ft	2.55W/Ft	20Ft/Tray,5Trays/Case
Aurora Flex	12VDC	Pinkish Purple / WW / Ice Blue / O / W / Y / R / G / B	1.4"	SMD 2835	24LED/Ft	2.8W/Ft	20Ft/Tray,5Trays/Case
Aurora Flex RGB	24VDC	RGB	6.6"	SMD 5050	21LED/Ft	4.4W/Ft	20Ft/Tray,5Trays/Case
Aurora Flex Red (Ruby Shell)	12VDC	Ruby Shell	1.4"	SMD 2835	24LED/Ft	2.55W/Ft	20Ft/Tray,5Trays/Case

Aurora Flex

Channel Letter Solutions

The best alternative to neon lighting. Our Fully flexible design will allow for 90° angles or less! Aurora Flex comes in 9 different colors and having a traditional outdoor neon look allows you to recreate any neon sign at half the cost and half the upkeep.

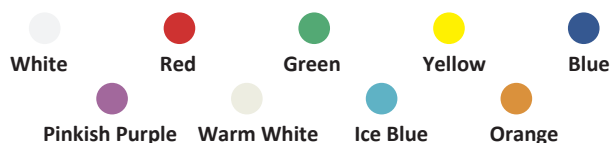


Aurora Flex



Aurora Flex Red (Ruby Shell)

9 COLORS



IP65



NEON SPECIFICATIONS

Working mode	Constant Voltage Technology
Max Mods (Series)	Full 56W load
Viewing Angle	270°
CRI	>70
Operating Temp	-20°C to +45°C
Neon Dimension	0.67"W x 1.06"H
Optical Structure	Eco-friendly flexible LED PVC tube with UV stabilizers.

Packaging	20Ft/Tray, 5Trays/Case
Protection Grade	IP65 wet-Location
Certifications	UL and cUL Recognized
Warranty	5 Years

Vivid, uniform Neon-like lighting without dark spots or gaps in the tube.

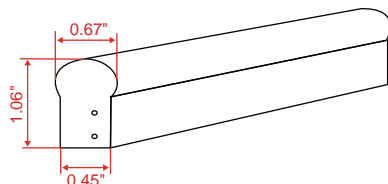
For use in place of exterior or interior border tubing, sign lettering, and accent lighting.

WARNING: OUTDOOR INSTALLATIONS REQUIRE OUTDOOR PARTS AND PERFORMING OUTDOOR CAP INSTALLATION PROCESS.

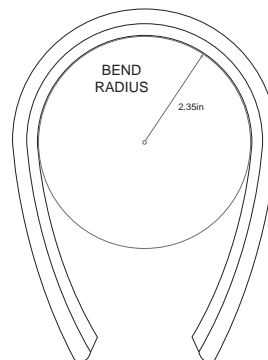
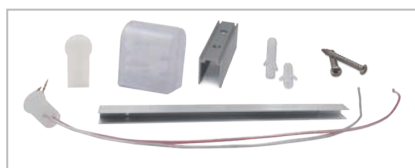
NEON PRODUCT OPTIONS LIST

Neon	Voltage	Power	Cut Intervals	LED	LED Qty	Viewing Angle
Aurora Flex	12VDC	2.8W/Ft	1.4"	SMD 2835	24LED/Ft	270°
Aurora Flex Red (Ruby Shell)	12VDC	2.55W/Ft	1.4"	SMD 2835	24LED/Ft	270°

NEON DIMENSIONS



ACCESSORIES



AURORA FLEX

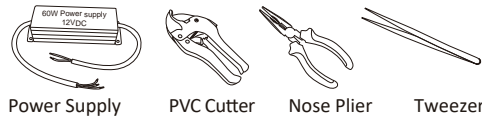


800.253.1569 | wensco.com

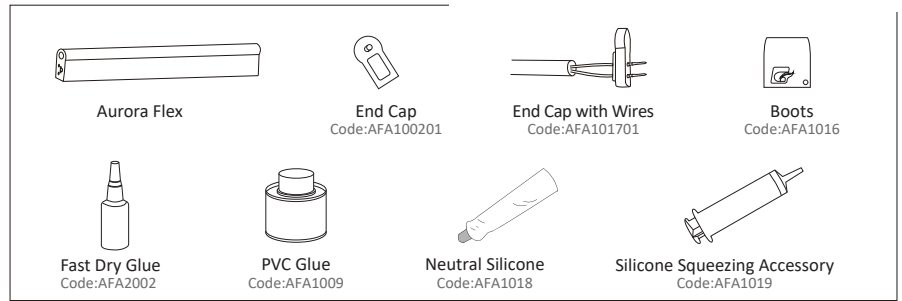
Power Supply Loads

Neon	Cut Intervals	FT (60W)
AURORA Flex	1.41"	20

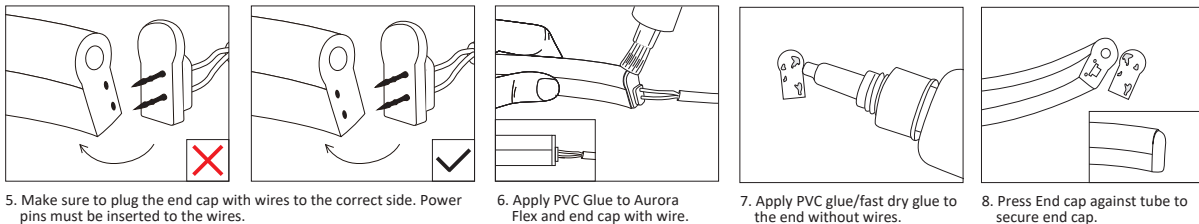
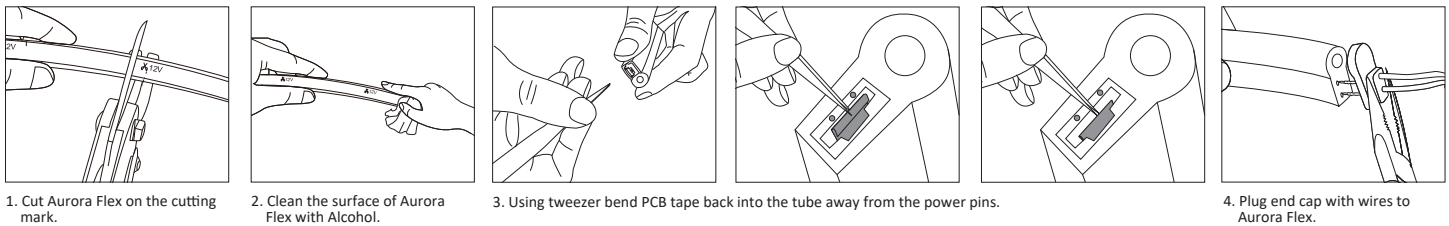
Installation Tools



Accessories



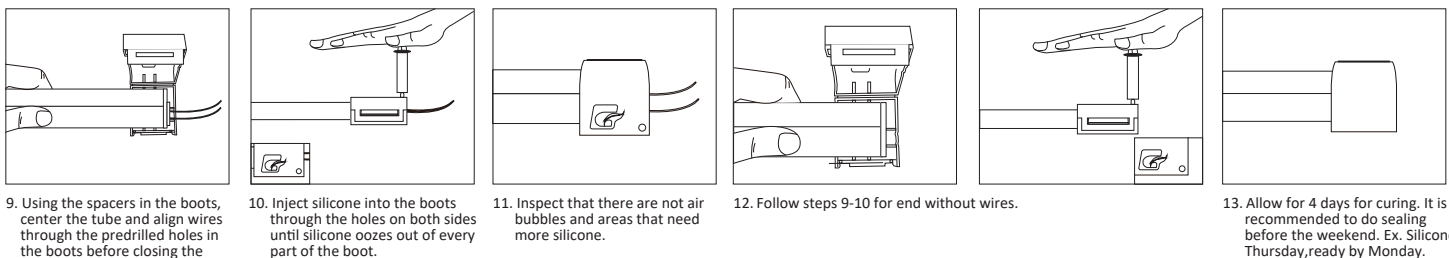
For Indoor Use



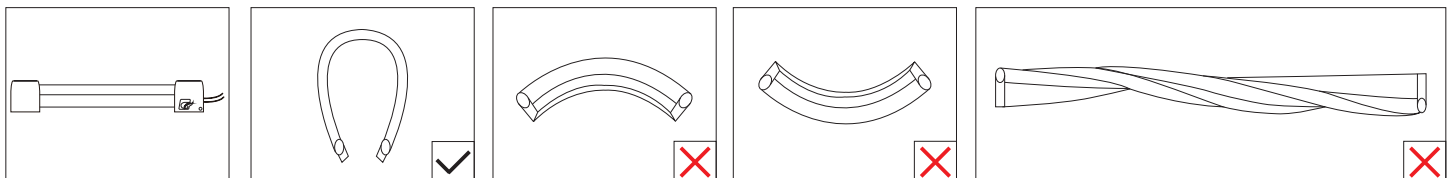
** Please test and light up the flex before applying PCV glue / fast dry glue to make sure connection is secure. Please secure PCV glue / fast dry glue for 24hrs before installing boots.*

For Outdoor Use

Base on Indoor Step



** Must use neutral silicone and let silicone secure for at least 3-4 days before installing.*



** Do not bend horizontally or contort Flex tube.*