

Using 3M™ Wrap Film Series 1080

Quick Links

[3M Graphics Warranties](#)

[Technical Information](#)

[Selector](#)

[Safety Data Sheets \(SDS\)](#)

[Videos](#)

Some of these links lead to web-based resources that are not product-specific.

About the Films

1. Can I use an overlamine?

Applying 3M™ Wrap Overlamine Series 8900 can alter the appearance of film series 1080's inherent texture. If a different graphic protection other than 3M™ Wrap Overlamine Series 8900 is used, then the wrap shop assumes all risk for testing, approving, suitability, and warranty.

2. Can I print on film series 1080?

Film series 1080 is available in many colors, textures, and finishes and is intended to be used without further processing. If the film is printed, with or without graphic protection, the wrap shop assumes all risk for testing, approving, suitability, and warranty.

3. Is the striped appearance in carbon fiber films typical?

Yes. All film in series 1080 have some texture that is integral in creating these unique looks. The carbon fiber films have the most texture, which appears to have more depth or texture in certain lighting conditions, giving a somewhat striped look.

4. Do certain colors, such as Satin Pearl White, appear to change color if applied in different directions?

Yes. Certain film colors, such as Satin Pearl White and the Brushed Metal colors, have a directional characteristic in their appearance. Also, film colors can vary slightly from lot-to-lot. For the most consistent looking color, use the same lot number of film for an entire vehicle.

3M now offers Color Flip options that change color when looking at them from different viewing angles. See 3M.com/1080films and [3M Product Bulletin 1080](#) for details.

IMPORTANT NOTE

Textured, metallic, pearl, and color flip films may have a directional characteristic in their appearance. For the best overall appearance, do not alternate between lengthwise and widthwise graphic panels.

Installation Tips

1. Clean the vehicle properly before applying film.

Cleaning the application surface properly is one of the most important steps to a good application. Wash and dry the vehicle thoroughly. Wipe the application area and a large area around it with a solvent-based cleaner, wiping dry as you work. Wipe again with a 2:1 mixture of Isopropyl Alcohol (IPA) and water, wiping dry as you work. For complete details, please read [3M Instruction Bulletin 5.36](#).

2. Use masking tape for alignment.

Always use masking tape to mark alignment. Do not use a grease pencil. Its waxy core becomes embedded in the film's texture and attempting to remove it may damage the texture.

3. Cover the edge of the squeegee to reduce scratches.

The unique finishes on film series 1080 are sensitive to installation scratches and require careful handling during installation. We recommend using a high density felt squeegee or covering the edge of a 3M™ Applicator PA1-G (gold) with the loop side of 3M™ Scotchmate™ Reclosable Hook and Loop Fastener - Loop portion SJ-35231 or PTFE tape. Another option is to use a squeegee with a suede or nylon wrapped edge.

4. Use a heat gun, not a torch, for heating the film.

Heat the film only with a heat gun—never a torch. A torch is likely to alter the appearance of the finish permanently, which cannot be repaired.

5. 3M roller tools help in certain areas.

3M offers several roller based tools to help get the job done. 3M™ Rapid Roller Applicator CPA-2 is for flat areas, such as the hood or roof. 3M™ Roller L, 3M™ Roller S and 3M™ Vehicle Channel Applicator Tool VCAT-2 have specially shaped rollers to help conform heated film into channels and recesses. Read more about these tools in [3M Instruction Bulletin 5.36](#).

6. Application tape is rarely used.

Film series 1080 features a dual cast construction that is 3.5 mil thick. It has just enough rigidity to allow easy installation without an overlamine or application tape. Due to the film's texture, application tape may not work well with cut and prespaced graphics. Wrap shops may choose to test and approve an application tape. 3M™ Prespacing Tape SCPS-55 is a good one to try.

Installation Overview

1. Where can I get complete installation details?

[3M Instruction Bulletin 5.36](#) is specifically for installing vehicle wraps. We also offer world class training for professional growth as well as opportunities for earning an installer endorsement from 3M and being listed on the 3M website.

2. Does film series 1080 install the same way as film IJ180Cv3?

Installation is very similar to [3M™ Controltac™ Graphic Film with Comply™ Adhesive IJ180Cv3](#). Film series 1080 has the same features as film IJ180Cv3, that is, slideable and repositionable adhesive with virtually invisible air release channels. But be aware of these important details:

1. Align the graphic using masking tape.
2. Apply edge protection to the squeegee, such as PTFE tape or loop tape.
3. Use a heat gun, never a torch.

3. Is a film primer required on complex curves?

3M™ Primer 94 can help any film adhere to deep channels and complex contours. Please refer to [3M Instruction Bulletin 5.36](#) for recommendations.

4. Can I wet apply film series 1080?

No. 3M does not recommend or warrant using a wetting solution on the vehicle surface when applying any film with air release channels. However, the installer may use a wetting solution on top of the film layer to provide some slip resistance for the squeegee.

5. Can I apply film series 1080 to an older, rusted or repaired vehicle?

All wrap films, including film series 1080, should be applied to a “like new” vehicle finish for the best results. 3M’s warranty only applies to vehicles that have an excellent bond of the paint and its finish to the vehicle substrate. Any rust, bubbling, scratches, dents or other damage will be visible through the film, and such surface imperfections may damage the film or cause the film to fail prematurely. Areas repaired with body filler must be sanded, epoxy primed and for best results, finished with OEM (Original Equipment Manufacturer) paint or clear coat. Any recently applied finish must be cured for the full amount of time recommended by the paint manufacturer before applying film.

6. Are there any special application considerations?

Yes, particularly for Carbon Fiber and Metal finishes and [3M™ Wrap Overlaminate Series 8900](#). Because of the unique patterns designed into these films for their realistic looking finish, improper application techniques show more readily on these finishes. Proper stretching and heating of the film is essential to avoid creating visual imperfections, which can appear as dents, bends, stretch marks or kinks in the finish, See Figure 1.

To ensure a successful application:

- stretch large sections of the film. Stretching the film in smaller sections may cause a series of stretch marks at every location where you started and stopped stretching.
- always use even tension when stretching the film. Avoid applying too much force in one particular area, which may distort the film’s finish.
- apply as little heat—using only a heat gun—as necessary to stretch the film. Typically, do not exceed 150 °F (66 °C).
- avoid applying heat directly at the location where the film attaches to the substrate.

Figure 1. Proper techniques ensure a professional looking wrap (Carbon fiber shown on top, Brushed Metal on bottom)



Wrapped Vehicle Maintenance

1. Removing fingerprints.

The matte finish films may show fingerprints, but they can be cleaned off after the installation is complete by saturating a clean, lint-free towel with a 2:1 mixture of Isopropyl Alcohol (IPA) and water or 70% IPA, and then wiping and drying the film.

2. Removing stains.

Try a household cleaner, such as SimpleGreen®, and a lint-free cloth, followed by the technique used for "1. Removing fingerprints." on page 3.

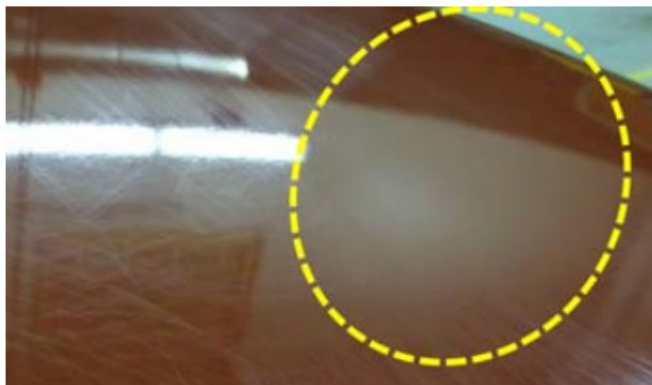
3. Removing scratches.

Many surface scratches will disappear when exposed to the sunlight on warm days. Otherwise, surface scratches may be removed by:

- using a 2:1 mixture of Isopropyl Alcohol (IPA) and water or 70% IPA.
- by heating the film surface with a heat gun. Typically, do not exceed 225 °F (107 °C). See Figure 2.

Deeper scratches will not come out. Always use care to avoid scratches during installation, maintenance, use and storage of the wrapped vehicle.

Figure 2. Circled area shows surface scratches removed with a heat gun



4. Cleaning a Wrap.

Please use our Wrap Care web page at www.3Mgraphics.com/CarMaintenance.

5. Refreshing the appearance of a vehicle wrap.

Before using any of these procedures, test and approve in an inconspicuous area before using on the entire wrap.

Film or Finish Type	Product or Solution
Smooth Gloss Texture	3M™ Perfect-it™ Show Car Paste Wax 39526 Meguiar's Gold Class™ Carnuaba Plus Premium Liquid Wax
Matte or Satin Texture	2:1 mixture Isopropyl Alcohol (IPA) and water
Matte White (1080-M10) Carbon Fiber White (1080-CF10; 8900-CF100; 8900-BR100)	Based on type/degree of contamination, use one or more of these solutions, in the order shown, to remove any build-up. 1. Hot, soapy water solution 2. 2:1 mixture IPA and water 3. Simple Green® All-Purpose Cleaner 4. Household chlorine bleach followed by the 2:1 mixture IPA and water 5. Mineral spirits followed by the 2:1 mixture IPA and water
Carbon Fiber Black (1080-CF12; 8900-CF100; 8900-BR100)	Meguiar's Ultimate Black Plastic Restorer

6. Replacing damaged wraps.

If your customer requests replacing only a damaged side of a wrap, you may want to recommend replacing the entire graphic. Many factors will contribute to the replaced section appearing different, which may not be satisfactory for the customer. Those factors include color shifts due to using film from a different lot of printing done at a later date, and the slight fading or change in gloss that may have occurred on the installed film.

Removing a Wrap

1. Removing film series 1080.

3M recommends that film be removed by a wrap professional. Film series 1080 is removable for up to 3 years after installation, providing the film has not been printed and no overlamine has been applied. Heat and/or chemicals may be required. Some adhesive residue may be left on the vehicle, which can be easily cleaned off with a product such as 3M™ Citrus Base Cleaner.

Refer to [3M Product Bulletin 1080](#) and [3M Instruction Bulletin 6.5](#) for more details.

2. Removal should not cause damage.

When used, applied, maintained, and removed according to 3M's instructions and within the product's 3M warranty period, film series 1080 should not damage an OEM paint finish upon removal.

Good to Know

1. Visit our social media sites and follow along!



2. More information at 3Mgraphics.com

More information on the web! To see the newest additions to this exciting product offering and to learn more product details, go to: www.3Mgraphics.com/1080.

3. Warranty Information.

For 3M warranty information, go to www.3Mgraphics.com/warranties.

Disclaimer

The information contained and techniques described herein are believed to be reliable, but 3M makes no warranties, express or implied, including but not limited to any implied warranty of merchantability or fitness for a particular purpose.

Limitation of Liability

Except where prohibited by law, 3M SHALL NOT UNDER ANY CIRCUMSTANCES BE LIABLE TO PURCHASER OR USER FOR ANY DIRECT (EXCEPT FOR THE LIMITED REMEDY PROVIDED IN THE 3M GRAPHICS WARRANTIES BULLETIN), INDIRECT, SPECIAL, INCIDENTAL, OR CONSEQUENTIAL DAMAGES (INCLUDING, BUT NOT LIMITED TO, LABOR, NON-3M MATERIAL CHARGES, LOSS OF PROFITS, REVENUE, BUSINESS, OPPORTUNITY, OR GOODWILL) RESULTING FROM OR IN ANY WAY RELATED TO 3M'S GRAPHICS PRODUCTS, SERVICES, or THIS BULLETIN. This limitation of liability applies regardless of the legal or equitable theory under which such losses or damages are sought.

Bulletin Change Summary

For the most current 3M Technical Information available to successfully use this product, please view this Bulletin electronically and click on the blue underlined links to view the relevant documents. Please read the entire Bulletin thoroughly.

Release H SEPT-2016:

- Updated Question 4 on page 1 to include information on color flip films.

Release G OCT-2015:

- Added 3M™ Wrap Overlaminates Series 8900 throughout the document.
- Updated to new format.

Commercial Solutions
3M Center
Building 220-12E-04
St. Paul, MN 55144-1000
Phone 1-800-328-3908
Web www.3M.com/Graphics

3M Canada
PO Box 5757
London, ON N6A 4T1
1-800-265-1840
Fax 519-452-6245

3M México S.A. de C.V.
Av. Santa Fe No. 55
Col. Santa Fe, Del. Alvaro
Obregón
México D.F. 01210
General 5255-5270-0400
Fax 5255-5270-2277

3M Puerto Rico, Inc.
350 Chardon Avenue
Suite 1100
San Juan, PR 00918
General 787-620-3000
Fax 787-620-3018

3M, Comply, Controltac, Perfect-it, and Scotchmate are trademarks of 3M. Gold Class, and Meguiars are trademarks or registered trademarks of Meguiars, Inc. Simple Green is a registered trademark of Sunshine Makers, Inc. All other trademarks are the property of their respective owners.

