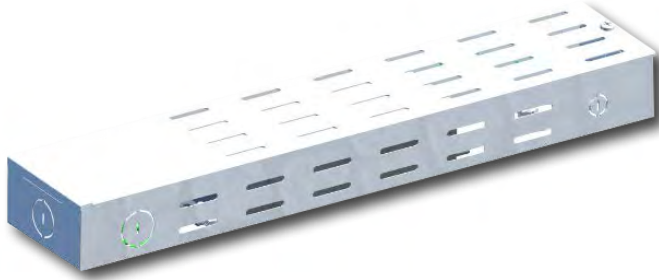


# PS2

## Power Supply Enclosure



### Key Features

- Engineered for use with signage lighting, commercial lighting, and industrial lighting applications.
- Available as a UL Listed enclosure or as a junction box and LED driver combo.
- Suitable for air handling spaces.
- Complies with UL 879, UL 8750, UL 1310, and CSA 22.2
- Rated for indoor (dry/damp) locations.

### Construction

- Robust 24-gauge steel housing protects components from harsh environments.
- Ventilation on three sides of the enclosure optimize thermal management.
- Housing is protected by a corrosion resistant powder coat finish.
- Choice of white, black, or galvanized finish.
- Dimensions: 15 in. X 3 in. X 1.63 in.
- Weight: 1.30 lbs.

### Mounting

- Suitable for cabinet or surface mounting use.
- Consult factory for additional mounting options.

### Product Overview

The PS2 is a multi-purpose enclosure used in LED lighting ranging from signage to commercial and industrial applications. The PS2 is designed to simplify installation of LED drivers and wire connections, all enclosed within one box. It's available as a UL Listed enclosure or as a junction box and LED driver combo. The enclosure is designed for indoor (dry/damp) locations and meets electrical code requirements. It has knockouts on both sides of the enclosure to accommodate all of the input and output connections.

### Product Applications

- Signage Lighting
- Commercial & Industrial Lighting

### Product Certifications/Approvals

- Complies with UL 879, UL 8750, UL 1310, and CSA 22.2
- Suitable for damp locations
- RoHS Compliant.



### Ordering Information

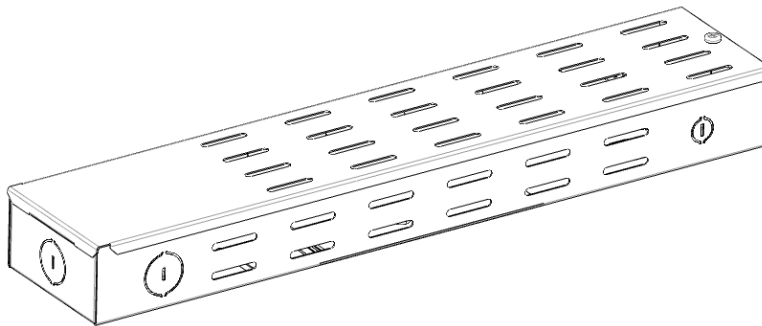
Example With Driver: **PS2-1-WT-N-15**  
Example Without Driver (Box Only): **PS2-1-WT**

PS2	<input type="text"/>	<input type="text"/>	<input type="text"/>	<input type="text"/>
Series	Variant	Finish	Dimmable	Driver Code
1	Standard	<b>WT</b> White <b>BK</b> Black <b>NA</b> Natural	<b>N</b> No <b>Y</b> Yes	See Driver Code Information Table (Page 2)

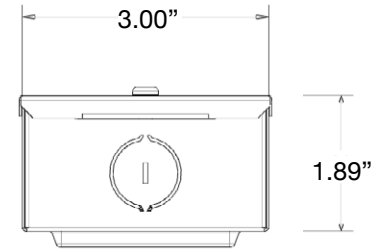
# PS2

## Power Supply Unit

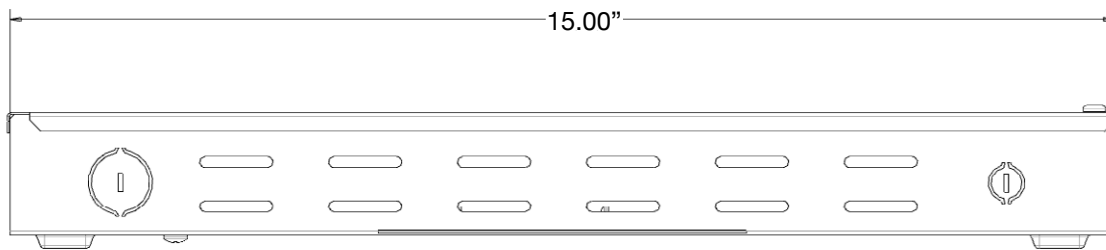
### Dimensions



End View



Side View



### Driver Code Information

Driver Option Code	Input Voltage	Max Output Power	Max Output Voltage	Max Output Current	Driver Part #	Dimmable
1	120V	60W	12V	5A	LED120A0012V50F	No
2	120-277V	60W	12V	5A	LEDINTA0012V50FO	No
3	120-277V	100W	24V	4.16A	XI100C410V024FNS1	No
4	120-277V	40W	56v	0.7A	XI040C070V056CNJ1	Yes
5	120-277V	40W	42V	1.05A	XI040C105V042CNJ1	Yes
6	120-277V	40W	36V	1.2A	XI040C120V035CNJ1	Yes
7	120-277V	100W	42V	2.3A	XI100C230V042CNS1	Yes
8	120-277V	100W	42V	2.3A	XI100C230V042FNS1	Yes
9	120-277V	30W	46V	0.65A	CI030C065V046CNN1	No
10	120-277V	39W	52V	0.75A	CI039C075V052CNN1	Yes
11	120-277V	35W	46V	0.75A	CI035C075V046FNN1	Yes
12	120-277V	41W	46V	0.87A	CI041C087V046CNN1	Yes
13	120-277V	45W	46V	0.96A	CI045C096V046CNN1	No
14	120-277V	100W	24V	4.16A	XI100C410V024CNS1	Yes
15	200-480V	100W	42V	2.28A	HVG-100-42A	Yes
16	100-277V	60W	12V	5A	NPF-60-12	No
17	200-240V	100W	24V	4A	HVG-100-24A	No
18	120-277V	60W	12V	5A	PSB-1-12-60	No
19	120-277V	96W	24V	4A	PSB-1-24-96	No