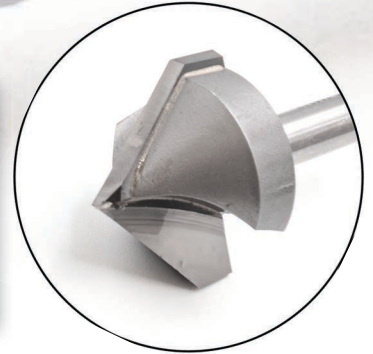


V-GROOVE ENGRAVING SERIES

V-GROOVE ENGRAVING SERIES:

Perfect for your signmaking and engraving needs. Pointed tip with very small flat allows for sharp engraved letters and designs.

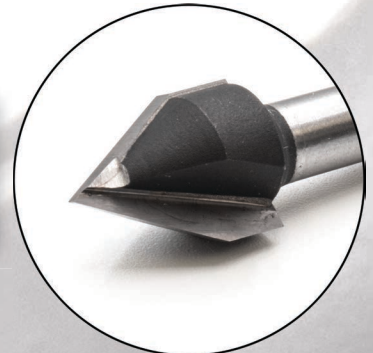
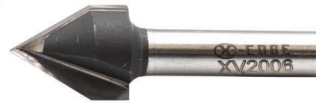
2 FLUTE 90° V-TOOL
(Best for med-lrg shapes/letters)



FOR: HDU, WOOD, PLASTICS, ALUMINUM

PART NUMBER	SHANK SIZE	V-DEPTH	OVERALL	CUT WIDTH
XV2005	1/4"	11/64"	1-5/8"	3/8"
XV2006M	6mm	4.5mm	41mm	9.5mm
XV2005-LD	1/4"	9/16"	1-7/8"	1"

2 FLUTE 60° V-TOOL
(Best for small shapes/letters or sharp details)



FOR: HDU, WOOD, PLASTICS, ALUMINUM

PART NUMBER	SHANK SIZE	V-DEPTH	OVERALL	CUT WIDTH
XV2006	1/4"	3/8"	1-3/4"	1/2"



800.253.1569 | wensco.com